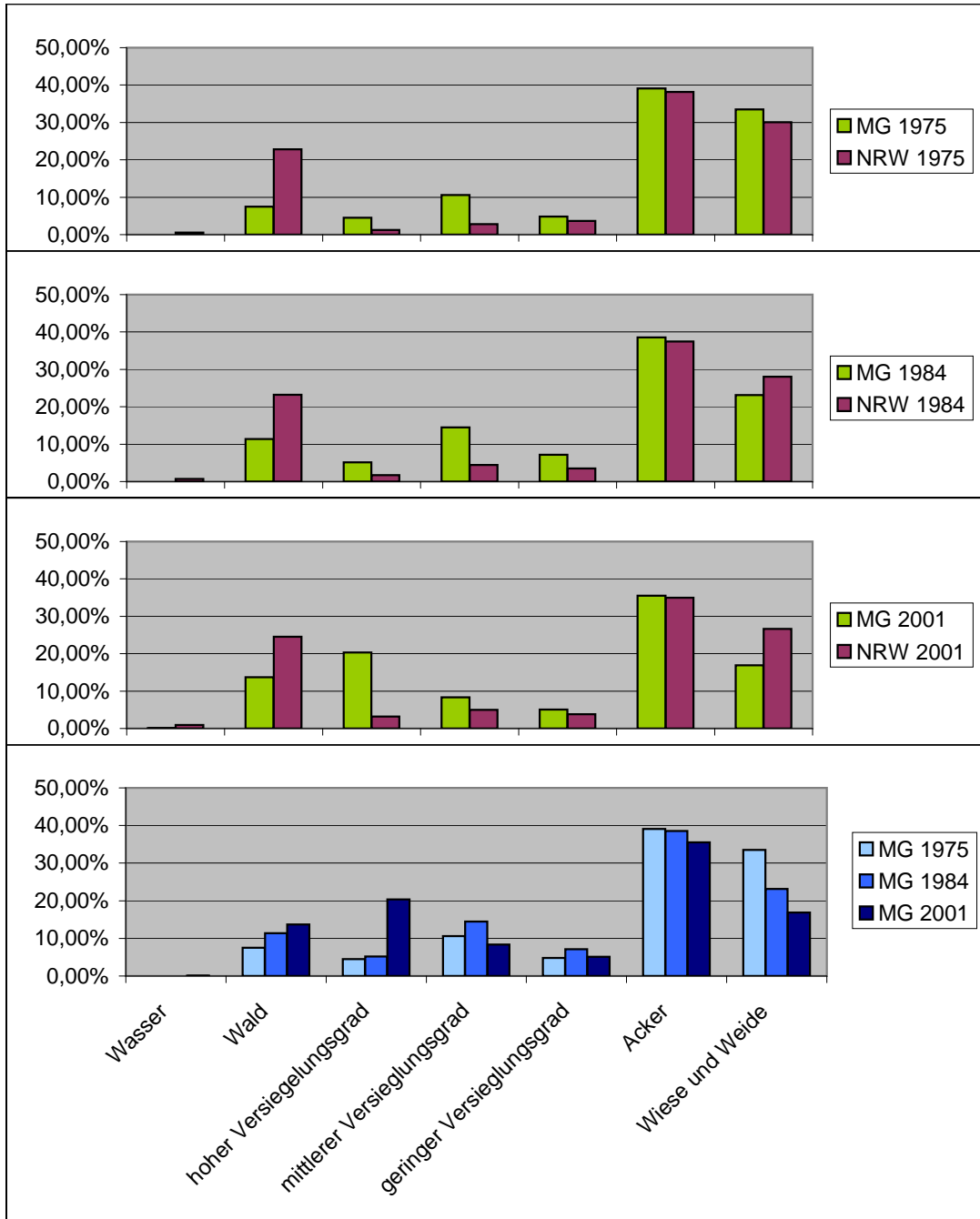


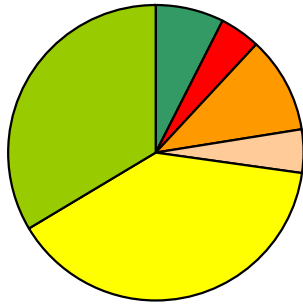
Nutzungsart	MG 1975	NRW 1975	MG 1984	NRW 1984	MG 2001	NRW 2001
Wasser	0,00%	0,52%	0,03%	0,73%	0,06%	0,92%
Wald	7,47%	22,82%	11,40%	23,18%	13,72%	24,50%
hoher Versiegelungsgrad	4,51%	1,22%	5,16%	1,69%	20,34%	3,17%
mittlerer Versiegelungsgrad	10,58%	2,81%	14,48%	4,46%	8,34%	5,00%
geringer Versiegelungsgrad	4,80%	3,64%	7,14%	3,53%	5,08%	3,79%
Acker	39,12%	38,14%	38,57%	37,48%	35,55%	34,99%
Wiese und Weide	33,52%	30,04%	23,14%	28,00%	16,91%	26,65%

## Siedlungsentwicklung in Mönchengladbach

Nach Infos des Ministerium für Umwelt und Naturschutz, Landwirtschaft und Verbraucherschutz des Landes Nordrhein-Westfalen: Landnutzung und Flächenverbrauch in NW (<http://www.flaechennutzung.nrw.de>)



MG 1975



Wasser

Wald

hoher Versiegelungsgrad

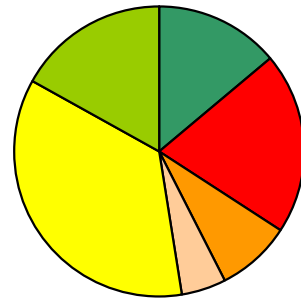
mittlerer Versiegelungsgrad

geringer Versiegelungsgrad

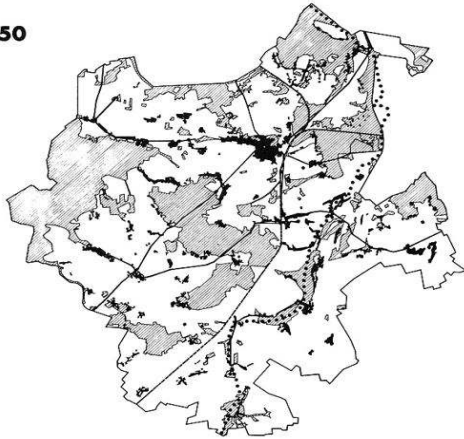
Acker

Wiese und Weide

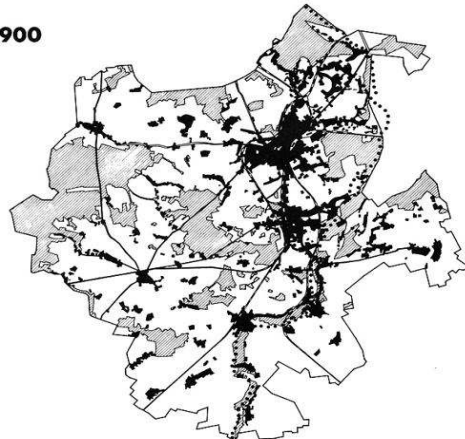
MG 2001



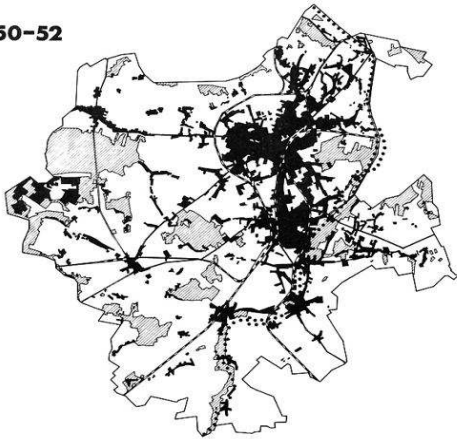
1850



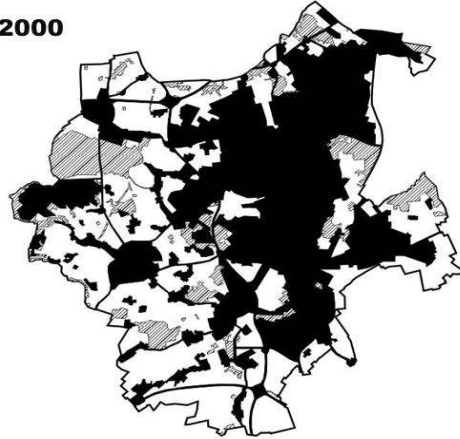
1900



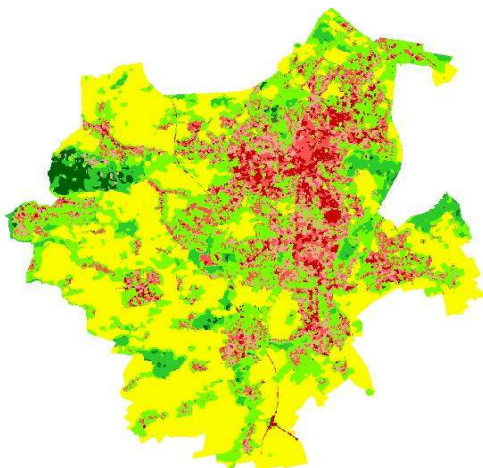
1950-52



2000



1975



2001

